



WE HAVE THE RIGHT TRUCK FOR THE RIGHT JOB

Feterl's Model 8000 with an 11' Heavy Duty Crane Body

We specialize in Model 8000 series commercial bodies. They are designed for a 2 ton truck with a clear 84" CA, 21,000 GVW-33,000 GVW. Our heavy duty crane body compartments are 24" D x 56" H all built of 10ga. steel with 10ga. reinforced doors. Stainless steel hinges and "D" handles are also used. Compartments are pressurized and have automotive weather stripping, plus the "Gang Lock"™ is featured on all models. A 1/4" crane tower is 100% welded to the over-all substructure. A full 50" deck area has 1/8" tread plate throughout.



Feterl
MFG. CO.

A United Dominion Company

411 Center Ave. West, PO Box 398 Salem SD 57058
Phone (605) 425-2206 or Fax (605) 425-2183 • www.feterl.com

WATTS (800) 367-8660

"Power Lift" 8000LB. CRANE

Crane Specifications

Weight: 2350lbs. (1065kg)
 Storage Dimensions: 24" W, 46" H, 14 ft. 10in. L (61cm W x 117cm H x 452cm L)
 Base plate dimensions: 24" x 24" (61cm x 61cm)
 Horizontal Reach: 13½ ft. (4.11m) to 22½ ft (6.86m) with 9 ft. (2.74m) hydraulic extension
 Vertical Reach: -1 to 25ft. (-0.3m to 7.6m)
 Cable Reach @ Max Extension (from tip of boom):
 Single Line: 66ft. (20m)
 Double Line: 30ft. (9.1m)
 Boom Elevation: -8° to 80°
 Rotation: 370°
 Cable: 95ft. (29m) 3/8" (0.95cm) IWRC cable, 4000lb. (18130kg) single line pull.
 Winch speed: 16-21 ft./min. (4.9-6.4 m/min) single line pull, 8-10½ft./min (2.4-3.2 m/min) double line pull.

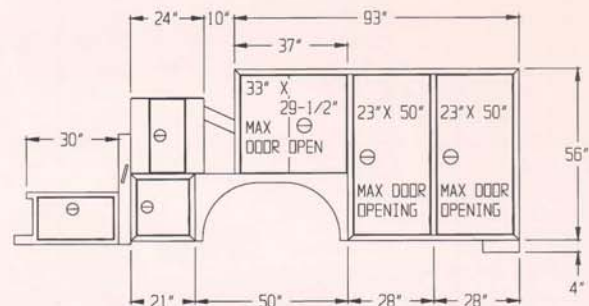
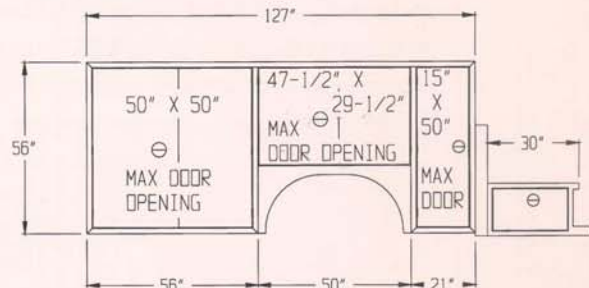
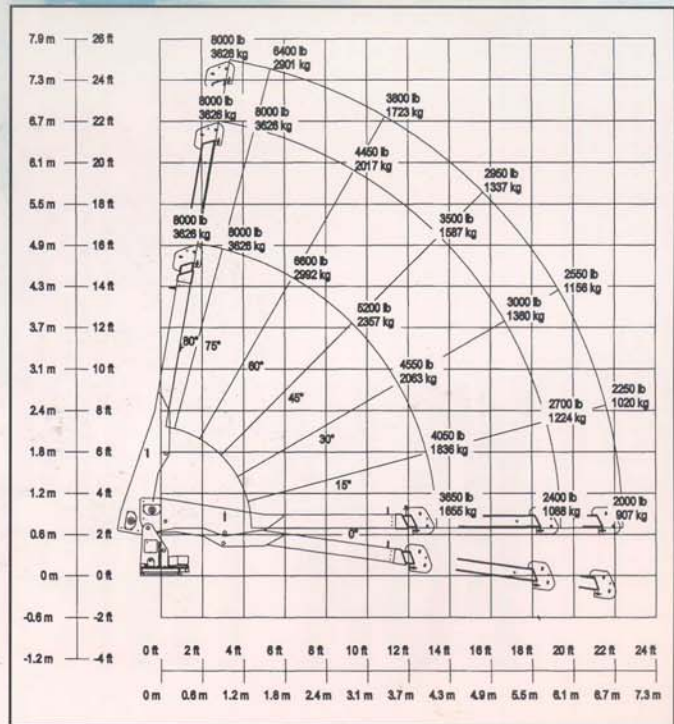
Quality Standard Equipment

Complete Crane Manual	10 Gauge Compartments
Back-up Alarm, Fire Extinguisher	Pressurized Compartments
SS "D" Handles	10 Gauge Doors
Warning Triangles, Side Markers	Special Automotive Weather Stripping
Ziebart Undercoating	Powder Coated Door Holder
Hydraulic Outriggers/Check Valve	Nine Adjustable Shelves
1/4" Crane Towers	Full Length Drip Rails
HD Removable Tail Gate	50" Tread Plate Deck Area
Hydraulic Oil Reservoir	Rear Step w/ Hand Rail
Custom Stainless Steel Hinges	Flush Mounted Lights
Crane Saddle	Mud Flaps
PTO w/Single Stage Pump	Sleeved Substructure
25' Control Cable	Heavy Duty Step Bumper
No Wheel Wells	Wiring in Conduit/Loom
Power Extensions on Cranes	Complete Filter System
Hydraulic Oil Cooler Thermostat Controlled	Added Leaf Springs/Spacers
Crane Overload Protection System "The Gang Lock"	In-Deck Tie Downs
Heavy Duty Workbench	60" Oxy/Acty compartment Chain Binder & Pockets
	Feather Touch Crane Controls

Four Year 100% PPG Paint Warranty

Quality Optional Equipment

Drawers w/Ball Bearing Slides	Hydraulic Driven Air Compressor
Light Packages	Engine Driven Air Compressors (G or D)
Welder Decks	Welder/Generators (Gas or Diesel)
Mini Lube Systems	Evac. Systems
Electrical Plug-Ins	Bolt Bins
Top Covers/Fold Back or Other	Compartment Mtd. Air Compressors
Vise & Grinder Mounts	Power In & Out Outriggers
Extra Shelving	Extra ASME Air Tanks
Compartment Lighting	Top Box Roll Out Tray
Extra Compartments	Vinyl Covers
Wireless Crane Controls	Side Mounted Tie Downs



Feterl MFG. CO.

A United Dominion Company

411 Center Ave. West, PO Box 398 Salem SD 57058
 Phone (605) 425-2206 or Fax (605) 425-2183 • www.feterl.com

WATTS (800) 367-8660